

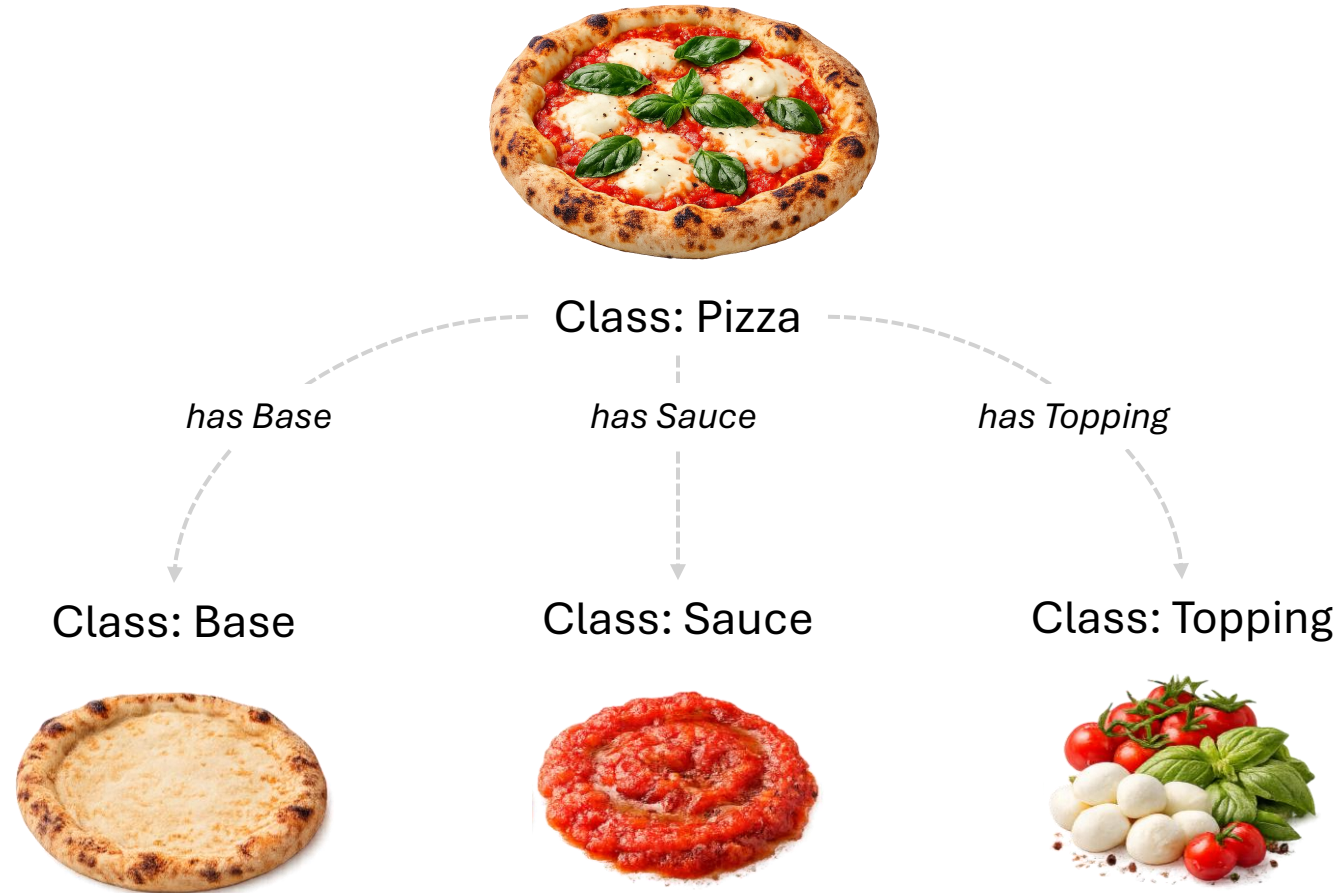


Proposing an Ontology for the Innovative Design of Future-Ready Forest Decision Support Systems

Sina Reuter, Verena C. Griess, Adriano Mazziotta, Christian Rosset, Harald Vacik, Ivo Vinogradovs, Olalla Díaz-Yáñez

May 07 2026, EGU 2026 Vienna

An ontology is a formal description of knowledge as a set of concepts and their relationships.



*The domain of forest decision support systems (DSS) is **highly fragmented.***



limited
transparency

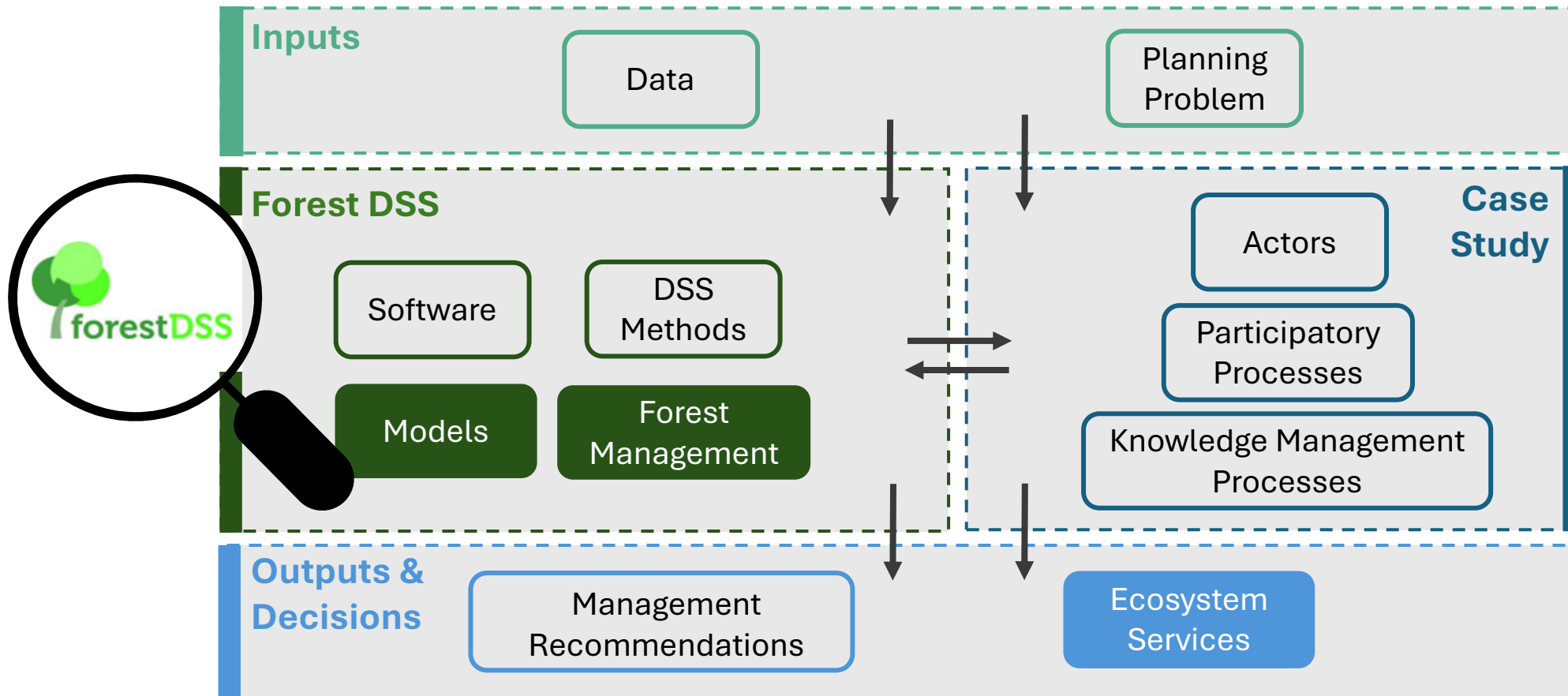


poor
interoperability

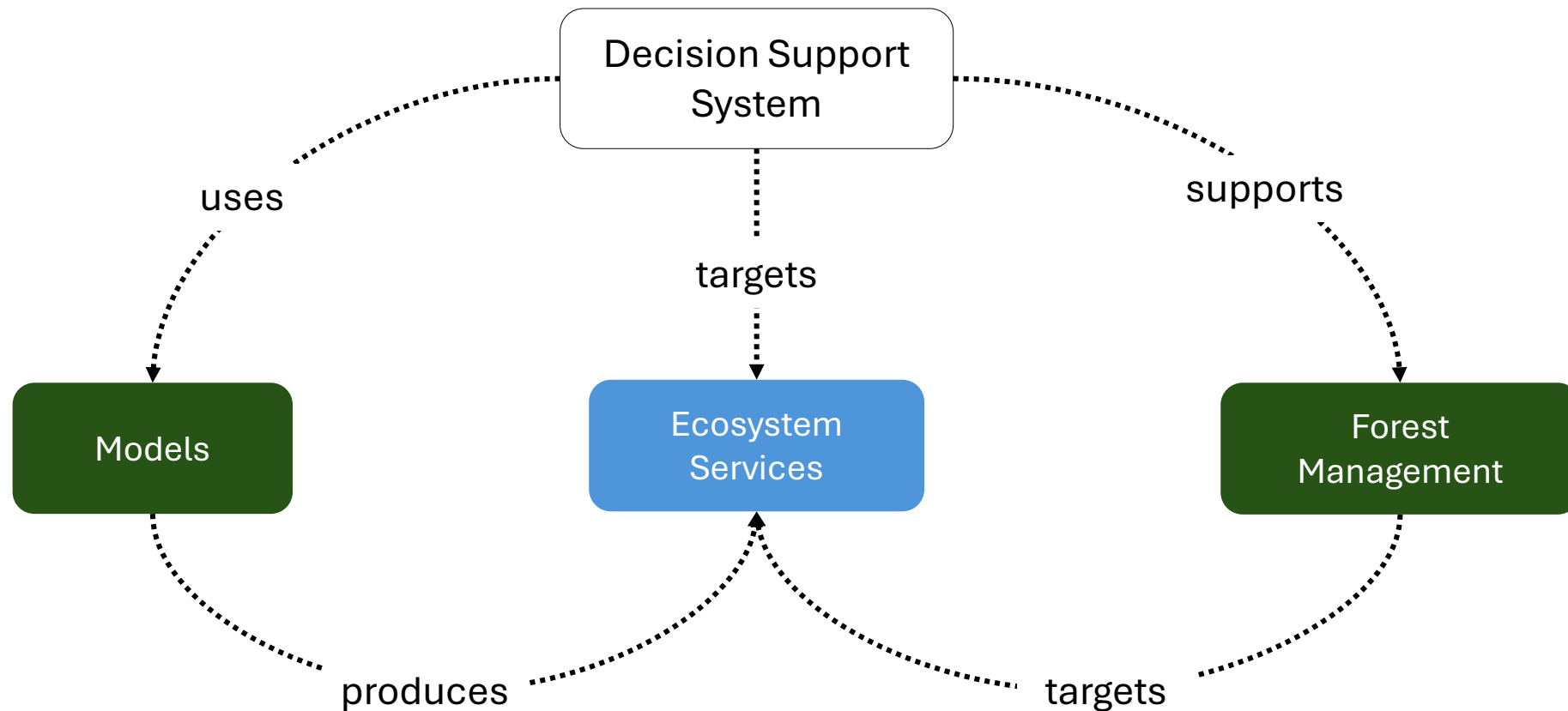


reduced
knowledge transfer

Four connected classes form the semantic backbone of the ForestDSS ontology.



Four connected classes form the semantic backbone of the ForestDSS ontology.



ForestDSS establishes a shared conceptual foundation for forest decision support systems.



It improves how we can **describe, compare, and select** DSS.



It creates basis for **transparent, interoperable, and scalable** DSS development.



It opens opportunities for **advanced applications**.

*find out
more*



Sina Reuter

sina.heubel@usys.ethz.ch

